

EJOT® SUPER-SAPHIR **self-drilling screw JT3-D-6H-5.5/6.3**

Fastening sandwich panels to 1.5–5 mm steel substructure

www.ejot.com

EJOT®

Self-drilling screws JF3/JT3

A2 stainless steel with hardened steel point / steel drill point



EJOT® SUPER-SAPHIR self-drilling screw JT3-D-6H-5.5/6.3

Length [mm]	For sandwich panels [mm]	Clamp thickness [mm]	PU	Price/100 [EUR]	Order description	Article number
Sealing washer E16, Ø 16 mm						
67	35 - 40	30 - 48	250		JT3-D-6H-5.5/6.3x67-E16	3 554 511 372
87	42 - 60	37 - 68	200		JT3-D-6H-5.5/6.3x87-E16	3 556 011 371
107	52 - 80	47 - 88	200		JT3-D-6H-5.5/6.3x107-E16	3 556 111 371
127	72 - 100	67 - 108	150		JT3-D-6H-5.5/6.3x127-E16	3 556 211 371
147	92 - 120	87 - 128	150		JT3-D-6H-5.5/6.3x147-E16	3 556 311 371
167	112 - 140	107 - 148	150		JT3-D-6H-5.5/6.3x167-E16	3 556 711 371
197	140 - 170	137 - 178	100		JT3-D-6H-5.5/6.3x197-E16	3 559 711 372
237	170 - 210	166 - 218	100		JT3-D-6H-5.5/6.3x237-E16	3 559 611 372
267	200 - 240	196 - 248	100		JT3-D-6H-5.5/6.3x267-E16	3 559 911 372
Sealing washer E19, Ø 19 mm						
67	35 - 40	30 - 48	250		JT3-D-6H-5.5/6.3x67-E19	3 554 566 372
87	48 - 60	37 - 68	200		JT3-D-6H-5.5/6.3x87-E19	3 556 066 371
107	58 - 80	47 - 88	100		JT3-D-6H-5.5/6.3x107-E19	3 556 166 371
127	72 - 100	67 - 108	150		JT3-D-6H-5.5/6.3x127-E19	3 556 266 371
147	92 - 120	87 - 128	150		JT3-D-6H-5.5/6.3x147-E19	3 556 366 371
167	112 - 140	107 - 148	100		JT3-D-6H-5.5/6.3x167-E19	3 556 766 371
197	140 - 170	137 - 178	100		JT3-D-6H-5.5/6.3x197-E19	3 559 766 372
237	170 - 210	166 - 218	50		JT3-D-6H-5.5/6.3x237-E19	3 559 666 372
267	200 - 240	196 - 248	50		JT3-D-6H-5.5/6.3x267-E19	3 559 966 372
Sealing washer E22, Ø 22 mm						
67	35 - 40	30 - 48	200		JT3-D-6H-5.5/6.3x67-E22	3 554 513 372
87	48 - 60	37 - 68	150		JT3-D-6H-5.5/6.3x87-E22	3 556 013 371
107	58 - 80	47 - 88	150		JT3-D-6H-5.5/6.3x107-E22	3 556 113 371
127	72 - 100	67 - 108	100		JT3-D-6H-5.5/6.3x127-E22	3 556 213 371
147	92 - 120	87 - 128	100		JT3-D-6H-5.5/6.3x147-E22	3 556 313 371
167	112 - 140	107 - 148	100		JT3-D-6H-5.5/6.3x167-E22	3 556 713 371
197	140 - 170	137 - 178	100		JT3-D-6H-5.5/6.3x197-E22	3 559 713 372
237	170 - 210	166 - 218	50		JT3-D-6H-5.5/6.3x237-E22	3 559 613 372
267	200 - 240	196 - 248	50		JT3-D-6H-5.5/6.3x267-E22	3 559 913 372

Order information: Further lengths upon request.

Application area

- Fastening sandwich panels to 1.5–5 mm steel substructure

Properties

- A2 stainless steel with hardened drill point
- Stainless steel sealing washer
- Pre-assembled sealing washer
- With free spin zone under screw head
- High thread

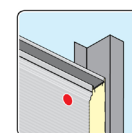
Technical Data

Drive	Hexagon AF8
Ø screw	5.5 mm
Ø high thread	6.3 mm

WWW.AUSSCHREIBEN.DE

Minimum tensile strength	
Ø mm	kN
5.5	11.5

Minimum shear strength	
Ø mm	kN
5.5	7.5



Approval
ETA-13/0177

Cross reference

- Accessories
- Self-drilling screw JT3-6-5.5
- Self-tapping screw JZ3-6.3
- Self-tapping screw JZ7-6.3
- Metal screwdriver SCS 6.3

Note

See relevant annexes of European technical approvals at the following pages.

Please download complete European technical approvals at our website:

www.bau.ejot.com

Self-drilling screws JF3/JT3

A2 stainless steel with hardened steel point / steel drill point



Page 12 of European technical approval
ETA-13/0177 of 26 April 2013

English translation prepared by DIBt

Deutsches
Institut
für
Bautechnik



Materials:

Fastener: stainless steel (1.4301) – EN 10088
stainless steel (1.4401) – EN 10088

Washer: stainless steel (1.4301) – EN 10088

Component I: S280GD – EN 10346

Component II: S235, S275 or S355 – EN 10025-1
S280GD, S320GD or S350GD – EN 10346

Drilling capacity: $\Sigma(t_{N2} + t_{II}) \leq 6,50$ mm

Timber supporting structures:

No performance determined

t_{N1}, t_{N2}, d, D [mm]	t_{II} [mm]								
	1,50	2,00	2,50	3,00	4,00	5,00	—	—	—
$V_{R,k}$ [kN]	0,40	0,60	0,60	0,60	0,60	0,60	—	—	—
	0,50	1,50	1,50	1,50	1,50	1,50	—	—	—
	0,55	1,50	1,50	1,50	1,50	1,50	—	—	—
	0,63	1,60	1,60	1,60	1,60	1,60	—	—	—
	0,75	2,70	2,70	2,70	2,70	2,70	—	—	—
	0,88	2,70	2,70	2,70	2,70	2,70	—	—	—
	1,00	2,70	2,70	2,70	2,70	2,70	—	—	—
$N_{R,k}$ [kN]	0,40	1,57	1,57	1,57	1,57	1,57	—	—	—
	0,50	1,70	1,70	1,70	1,70	1,70	—	—	—
	0,55	2,00	2,00	2,00	2,00	2,00	—	—	—
	0,63	1,90	2,20	2,20	2,20	2,20	—	—	—
	0,75	1,90	2,60	3,40	3,40	3,40	—	—	—
	0,88	1,90	2,60	4,10	4,10	4,10	—	—	—
	1,00	1,90	2,60	4,20	4,90	4,90	—	—	—
max u [mm]	40	20,0	15,5	7,0	7,0	7,0	6,0	—	—
	50	23,0	18,5	9,0	9,0	8,5	7,0	—	—
	60	26,0	21,5	11,0	11,0	10,0	8,0	—	—
	70	28,5	24,0	13,5	13,5	13,0	11,0	—	—
	80	31,5	27,0	16,0	16,0	15,0	13,0	—	—
	100	37,5	33,0	21,5	21,5	19,0	16,0	—	—
	120	40,0	38,5	27,0	27,0	23,0	20,0	—	—
	140	40,0	40,0	32,5	32,5	26,0	23,0	—	—
≥ 160	40,0	40,0	32,5	32,5	26,0	23,0	—	—	
$M_{t,nom}$ [Nm]									

Self drilling screw	Annex 2
EJOT® JT3-D-6H-5,5/6,3 x L EJOT® JT3-D-6H-5,5/6,3 x L EJOT® JT3-D-FR-6H-5,5/6,3 x L EJOT® JT6-D-FR-6H-5,5/6,3 x L	
with sealing washer ≥ 16 mm	

Z36918.13

8.06.02-210/10

Self-drilling screws JF3/JT3

A2 stainless steel with hardened steel point / steel drill point



Page 13 of European technical approval
ETA-13/0177 of 26 April 2013

English translation prepared by DIBt

Deutsches
Institut
für
Bautechnik



Materials:

Fastener: stainless steel (1.4301) – EN 10088
stainless steel (1.4401) – EN 10088

Washer: stainless steel (1.4301) – EN 10088

Component I: S320GD or S350GD – EN 10346

Component II: S235, S275 or S355 – EN 10025-1
S280GD, S320GD or S350GD – EN 10346

Drilling capacity: $\Sigma(t_{N2} + t_H) \leq 6,50$ mm

Timber supporting structures:

No performance determined

	t_{N1}, t_{N2}, d, D [mm]	t_H [mm]								
		1,50	2,00	2,50	3,00	4,00	5,00	—	—	—
$V_{R,k}$ [kN]	0,40	0,65	0,65	0,65	0,65	0,65	0,65	—	—	—
	0,50	1,60	1,60	1,60	1,60	1,60	1,60	—	—	—
	0,55	1,70	1,70	1,70	1,70	1,70	1,70	—	—	—
	0,63	1,80	1,80	1,80	1,80	1,80	1,80	—	—	—
	0,75	2,80	2,80	2,80	2,80	2,80	2,80	—	—	—
	0,88	2,80	2,80	2,80	2,80	2,80	2,80	—	—	—
	1,00	2,80	2,80	2,80	2,80	2,80	2,80	—	—	—
$N_{R,k}$ [kN]	0,40	1,70	1,70	1,70	1,70	1,70	1,70	—	—	—
	0,50	1,90	1,90	1,90	1,90	1,90	1,90	—	—	—
	0,55	1,90	2,10	2,10	2,10	2,10	2,10	—	—	—
	0,63	1,90	2,40	2,40	2,40	2,40	2,40	—	—	—
	0,75	1,90	2,60	3,60	3,60	3,60	3,60	—	—	—
	0,88	1,90	2,60	4,20	4,50	4,50	4,50	—	—	—
	1,00	1,90	2,60	4,20	5,00	5,00	5,00	—	—	—
max u [mm]	40	20,0	15,5	7,0	7,0	7,0	6,0	—	—	—
	50	23,0	18,5	9,0	9,0	8,5	7,0	—	—	—
	60	26,0	21,5	11,0	11,0	10,0	8,0	—	—	—
	70	28,5	24,0	13,5	13,5	13,0	11,0	—	—	—
	80	31,5	27,0	16,0	16,0	15,0	13,0	—	—	—
	100	37,5	33,0	21,5	21,5	19,0	16,0	—	—	—
	120	40,0	38,5	27,0	27,0	23,0	20,0	—	—	—
	140	40,0	40,0	32,5	32,5	26,0	23,0	—	—	—
≥ 160	40,0	40,0	32,5	32,5	26,0	23,0	—	—	—	
$M_{t,nom}$ [Nm]										

Self drilling screw	Annex 3
EJOT® JT3-D-6H-5,5/6,3 x L EJOT® JT3-D-6H-5,5/6,3 x L EJOT® JT3-D-FR-6H-5,5/6,3 x L EJOT® JT6-D-FR-6H-5,5/6,3 x L	
with sealing washer $\geq \phi 16$ mm	